

## Seaweed Cultivation

The Seaweed Company (UNITED)

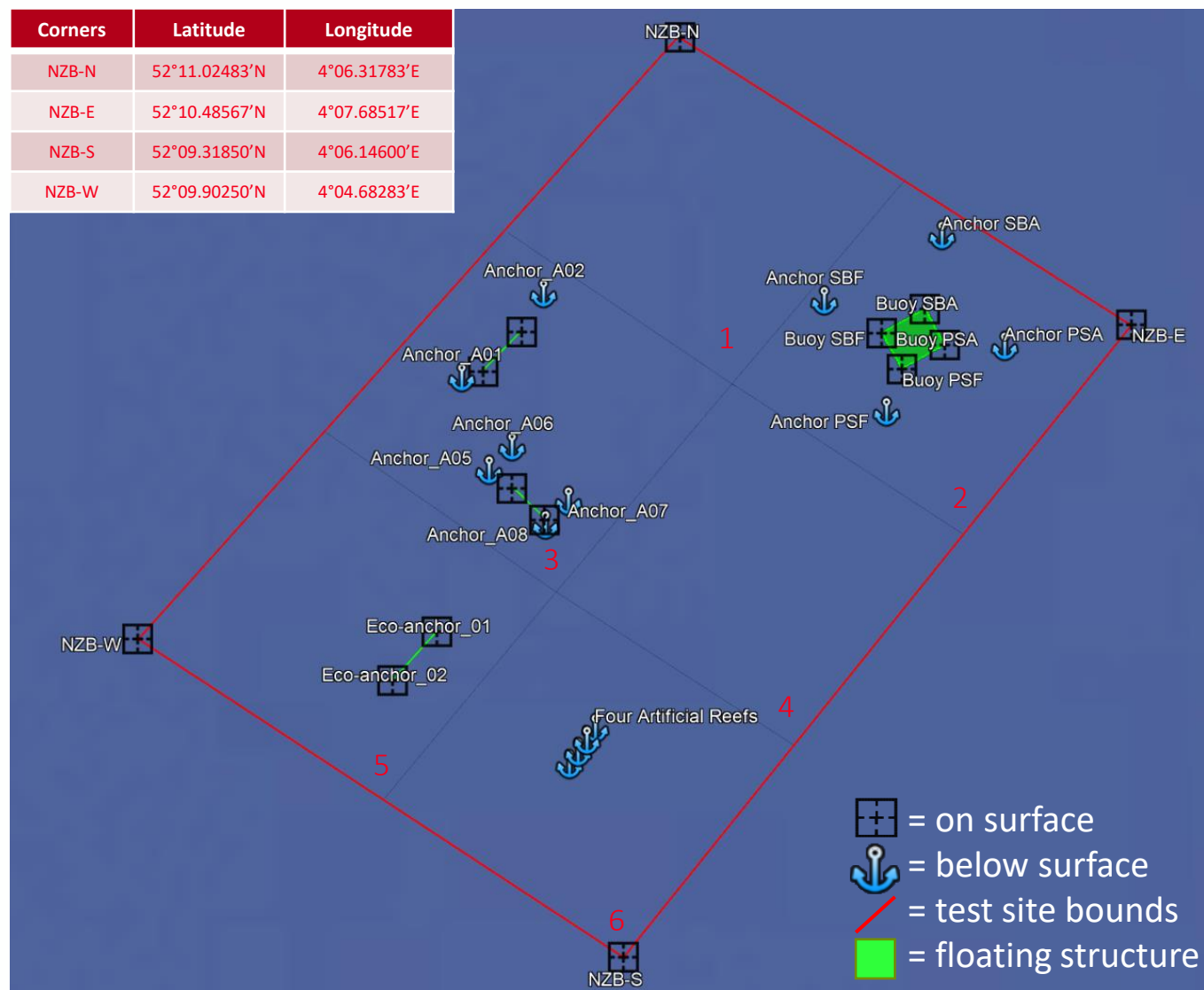
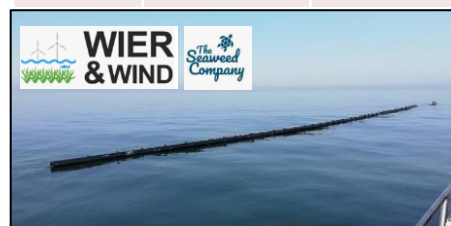
Plot 3	Latitude	Longitude
Anchor 1	52°10.35883'N	4°5.65333'E
Anchor 2	52°10.51550'N	4°5.90017'E
Anchor 5	52°10.18650'N	4°5.73683'E
Anchor 6	52°10.23033'N	4°5.80583'E
Anchor 7	52°10.12900'N	4°5.97650'E
Anchor 8	52°10.08517'N	4°5.90733'E



## Seaweed Cultivation + Eco-Anchors

Wier&Wind + NSF & AFAS

Plot 5	Latitude	Longitude
Anchor 1	52°9.916'N	4°05.584' E
Anchor 2	52°09.826'N	4°05.451'E



## Floating Solar Farm

Oceans of Energy

Plot 2	Latitude	Longitude
Anchor PSF	52°10.295'N	4°6.938'E
Anchor SBF	52°10.502'N	4°6.751'E
Anchor PSA	52°10.417'N	4°7.297'E
Anchor SBA	52°10.624'N	4°7.109'E



## Artificial Reefs

De Rijke Noordzee

Plot 6	Latitude	Longitude
Buoy 1	52°9.70962'N	4°6.05832'E
Buoy 2	52°9'41.22"N	4°6'1.98"E
Buoy 3	52°9'39.93"N	4°6'0.39"E
Buoy 4	52°9.64332'N	4°5.98056'E



Coordinator: Ir. Zinzi Reimert  
[zinzi@northseafarmers.org](mailto:zinzi@northseafarmers.org)  
 +31-(0)70-318 44 44  
[northseafarmers.org/offshore-test-site](http://northseafarmers.org/offshore-test-site)